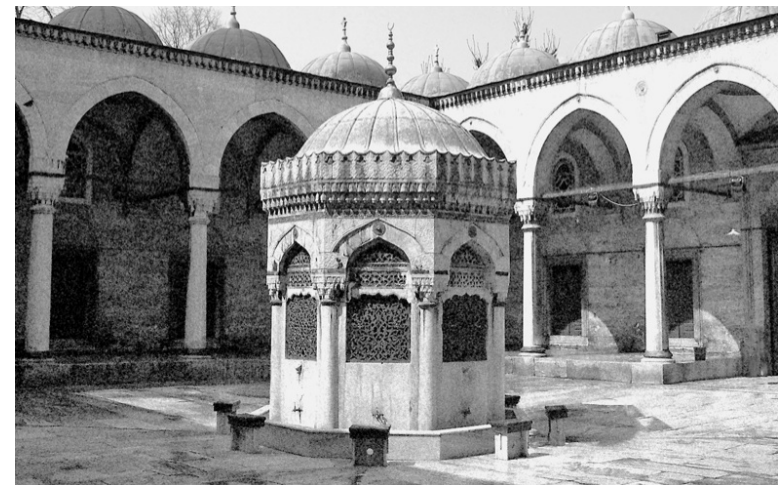


Wolfgang Weileder

Kiosk

An architectural sculpture that combines the materials of one religion with the iconography of another, provoking a discussion about the rules of architecture and the nature of sacred buildings.



Kiosk

Kiosk is a new full-scale, mobile architectural sculpture by Wolfgang Weileder. It has been designed using the visual language of Islamic architecture and is constructed out of wood from reclaimed church pews. It stands at a height of 5.2m, with a width and depth of 4.4m.

Kiosk combines the materials of one religion with the iconography of another, provoking a discussion about the rules of architecture and the nature of sacred buildings. Through this new work, Weileder is both creating a meditative space and a vehicle to explore wider issues of social inclusion, diversity and common ground in our society.

Kiosk is originally a word used in Persia to describe a garden pavilion that was used for contemplation and meditation. In the West, it is now commonly used to refer to a small shop in an urban context.

The work has the potential to be presented in a variety of architectural contexts from a white cube gallery space to former and current religious buildings, such as mosques and churches. This will allow for the work to become a catalyst for a debate about what defines space and how the history of the materials from which it is built will inform and shape its reading.



A Kiosk at the Ezbekieh Garden, Cairo
Photo by Émile Béchard Egypt in 1874.



Kiosk

FABRICA, Brighton
July - August 2021
520 x 440 x 440 cm

Kiosk

FABRICA, Brighton
July - August 2021
520 x 440 x 440 cm





Kiosk

[detail]

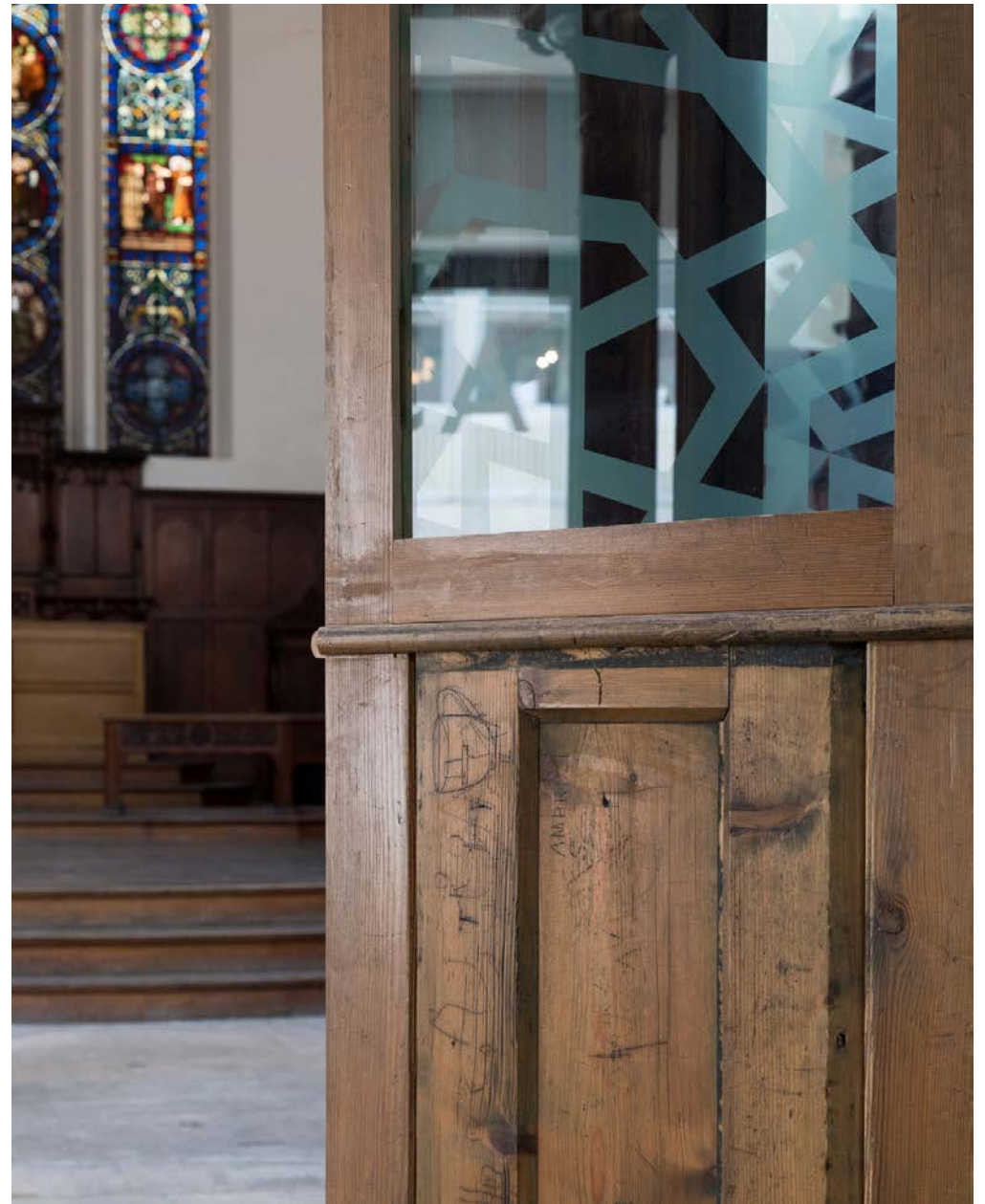
Kiosk

[detail]



Kiosk

[detail]





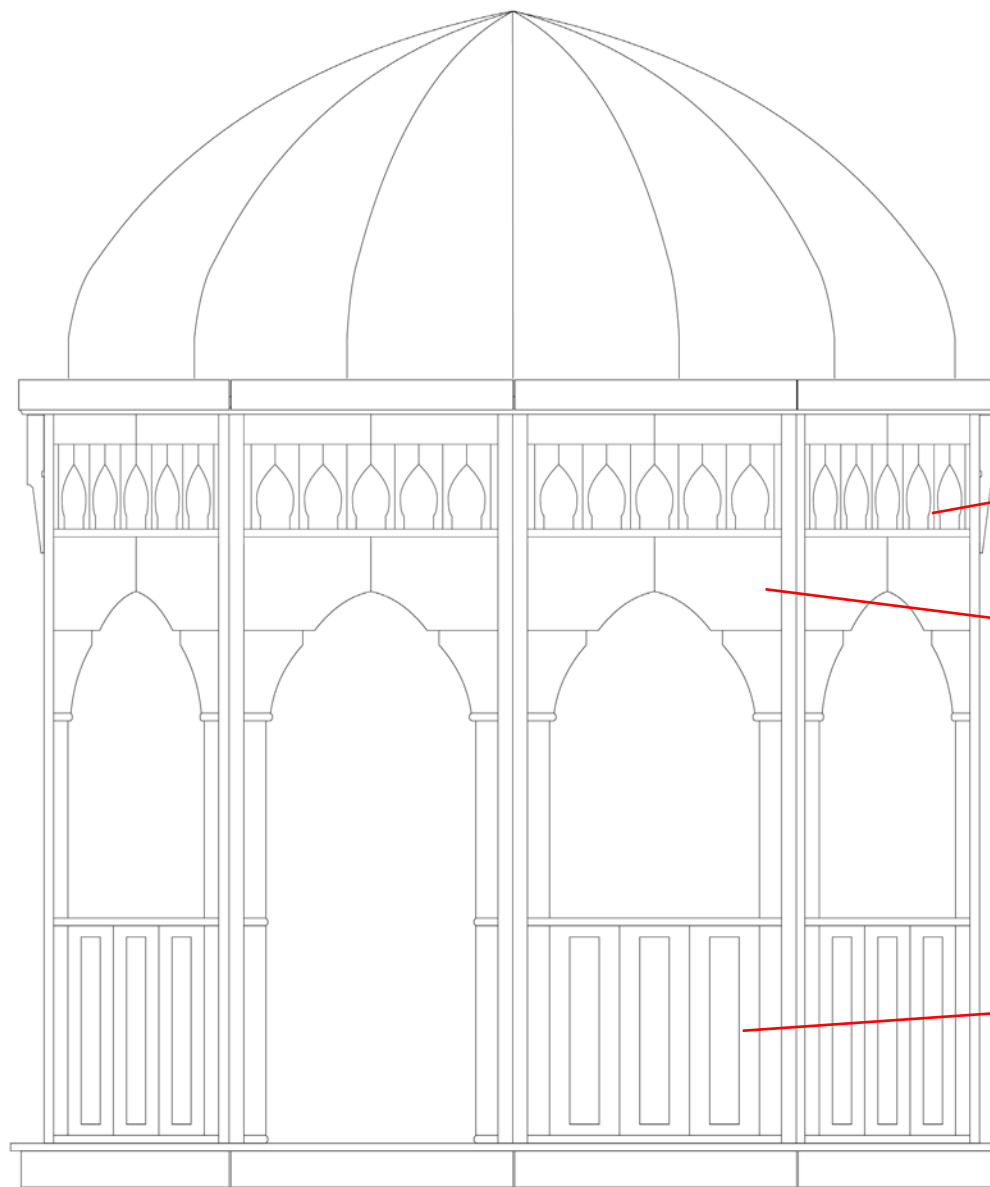
Kiosk

Ushaw Historic House,
Chapels & Gardens
April - July 2022



Kiosk

Ushaw Historic House,
Chapels & Gardens
April - July 2022



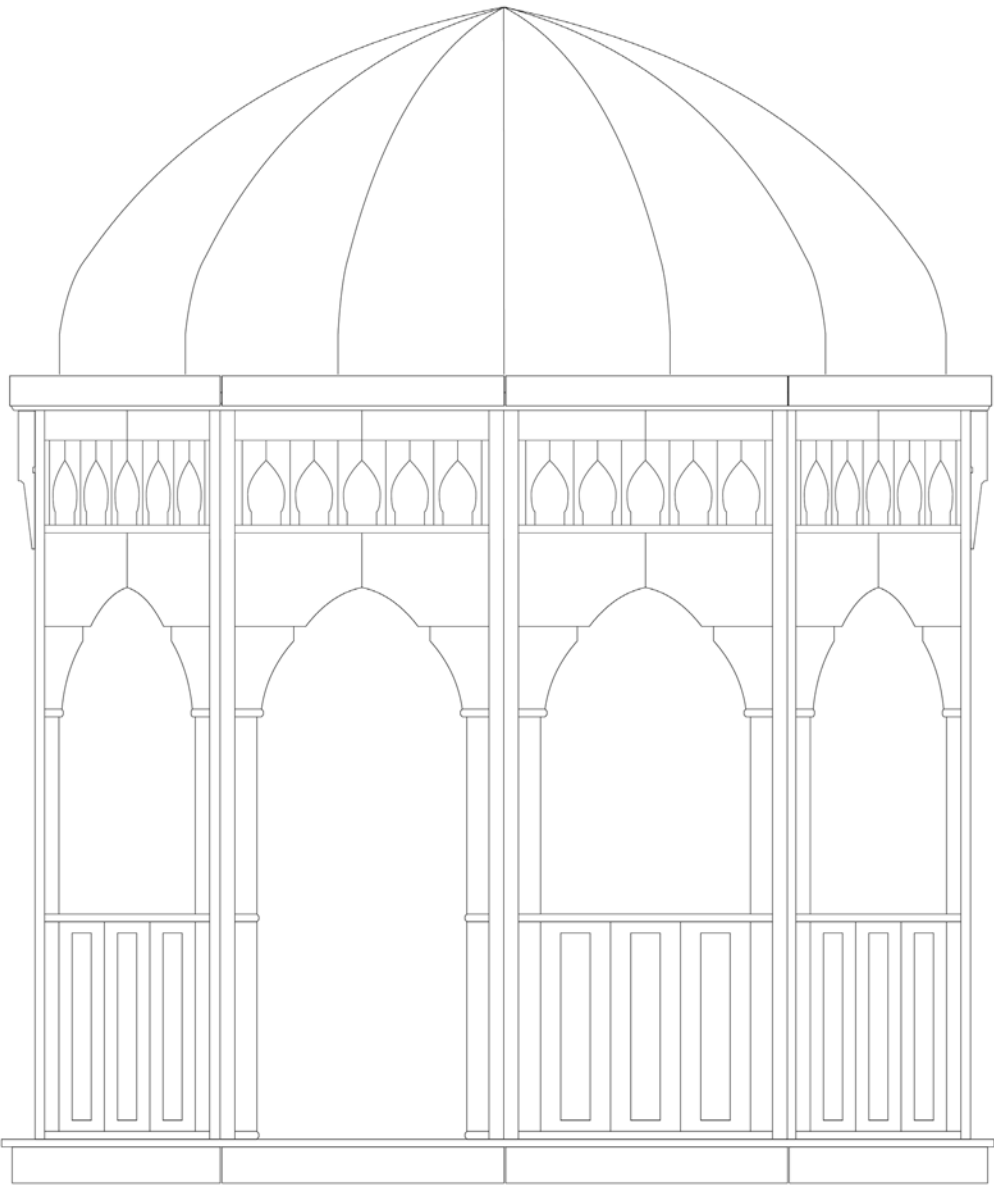
Kiosk
Reclaimed Victorian pews
from St. John's Church,
Shildon used for Kiosk



Kiosk

Reclaimed Victorian pews
from St. John's Church,
Shildon used for Kiosk

440 cm



540 cm

Kiosk

dimensions

Examples of related works of
Wolfgang Weileder



English folly
Royal Palace of Caserta
Caserta, Italy
2018



gap
Kunststiftung Erich Hauser
Rottweil, Germany
2015



res publica
5x5 Public Art Festival
Washington DC
2012



fold-up
Sunniside Gardens
Sunderland, UK
2008



galleria 48°
Neon Gallery
Bologna, Italy
2009



shelters
Galerie der Künstler
Munich, Germany
2000

Wolfgang Weileder Bio

Wolfgang Weileder is an artist whose practice is primarily concerned with the examination and critical deconstruction of architecture, public spaces and the interactions we have with the urban environment. His works are investigations into the relationship between time and space, the interface between permanence and transience, and how these can be explored to question our understanding of the landscape, both built and natural.

His work engages with the world through large-scale, temporary site-specific installation and sculpture; temporal recordings of spaces and environments through photography, film, performance and sound installation.

Wolfgang Weileder is originally from Munich, Germany. He moved to the UK in 2000 and is currently Professor in Contemporary Sculpture at Newcastle University.

A list of his projects, exhibitions and publications can be found at:
www.wolfgangweileder.com

Wolfgang Weileder
18 Stratford Grove
Heaton
Newcastle upon Tyne NE6 5AT
UK

studio +44-191-261 2962
e-mail: mail@wolfgangweileder.com